

**100 MILER
M&M YACHT CLUB, MENOMINEE, MI
JULY 25, 2009
SAILING INSTRUCTIONS**

1 RULES

- 1.1 The regatta will be governed by the rules as defined in *The Racing Rules of Sailing*.
- 1.2 The Sailing Instructions (SI) shall take precedence over the Notice of Race (NOR) for any conflicts that may exist between the two documents.

2 ENTRIES

Competitors may enter by delivering a completed entry form and other required documents, along with the entry fee to the M&M Yacht Club before 1800 hours on July 24th, 2009. See the entry form for a list of required documents and fees.

3 NOTICES TO COMPETITORS

Notices to competitors will be posted on the official notice board located inside the main door of the M&M Yacht Club.

4 CHANGES TO SAILING INSTRUCTIONS

Any change to the sailing instructions will be in the form of Additional Sailing Instructions and will be posted before 0730 on the day of the race.

5 SIGNALS MADE ASHORE

Signals made ashore will be displayed from the flagpole located outside the main door of the M&M Yacht Club. If a postponement is signaled ashore, no warning signal will be earlier than 1 hour after the flag AP is lowered. This changes "Race Signal AP and AP over H".

6 SCHEDULE and CLASS FLAGS

- 6.1 A tentative schedule of warning signal times for each division and section will be posted as a Notice to Competitors by 0700 on July 25th.
- 6.2 A Competitor's Meeting will be held at 0730 on July 25th at the M&M Yacht Club.
- 6.3 Unless postponed, the warning signal for the first start will be made at 0900 from the Committee Boat on station at the starting line. Warning signals for subsequent sections, unless postponed will be made according to the posted schedule. Signal Flags representing the numbers one through the total number of starts will serve as section flags.
- 6.4 All boats shall come within hailing distance of the Committee Boat and check in prior to their warning signal.

7 RACING AREA

The racing area will be the waters of Green Bay, between Menominee, Michigan and Door County, Wisconsin.

8 COURSES and MARKS

The courses to be sailed and the marks to be rounded are described in Appendix A, attached.

**100 MILER
M&M YACHT CLUB, MENOMINEE, MI
JULY 25, 2009
SAILING INSTRUCTIONS**

9 STARTING AND FINISHING LINES

The **Starting Line** will be off the Northeastern corner of the Menominee breakwater wall, between an orange flag on the Committee boat and an orange inflatable mark placed by the Race Committee. A limit mark may be attached to the Committee boat. A boat that touches a limit mark, the Committee boat, or passes between the limit mark and the Committee boat shall be considered to have touched a starting mark. This changes RRS 31. **All Starts will be from North to South.** The **Starting Sequence** will be according to the **Racing Rules of Sailing, Rule 26.** The **Finish Line** will be between an orange flag on the Northeastern corner of the Menominee Breakwater wall and an orange inflatable mark located approximately 100 yards to the East. **All boats will finish North to South.** In case of a finish after sunset, **please call the race committee on channel 71** about ten (10) minutes out and give your sail number and boat name. All boats withdrawing and not finishing the race must notify the race committee as soon as possible by radio on channel **71**, or by calling the M&M Yacht Club Race Committee at one of the following phone numbers 906-863-7140 (Yacht Club), 906-420-4200 (Race Committee Cell Phone), or 906-553-2205 (Race Committee Cell Phone).

10 TIME LIMIT

There will be no time limit. However, boats finishing after 2100 hours on July 25, 2008 will be asked to record their own time and report it to the Race Committee at the Yacht Club.

11 PROTESTS

- 11.1 Protests shall be submitted on a US Sailing Protest Form, which will be available at the **M&M Yacht Club.**
- 11.2 Protests shall be filed within two (2) hours of the finish of the protesting boat.
- 11.3 Posting of the notice of protest, hearing time, and place of hearing on the **Official Notice Board** located at the **M&M Yacht Club** shall constitute the notification that is required under RRS 63.2.

12 SCORING

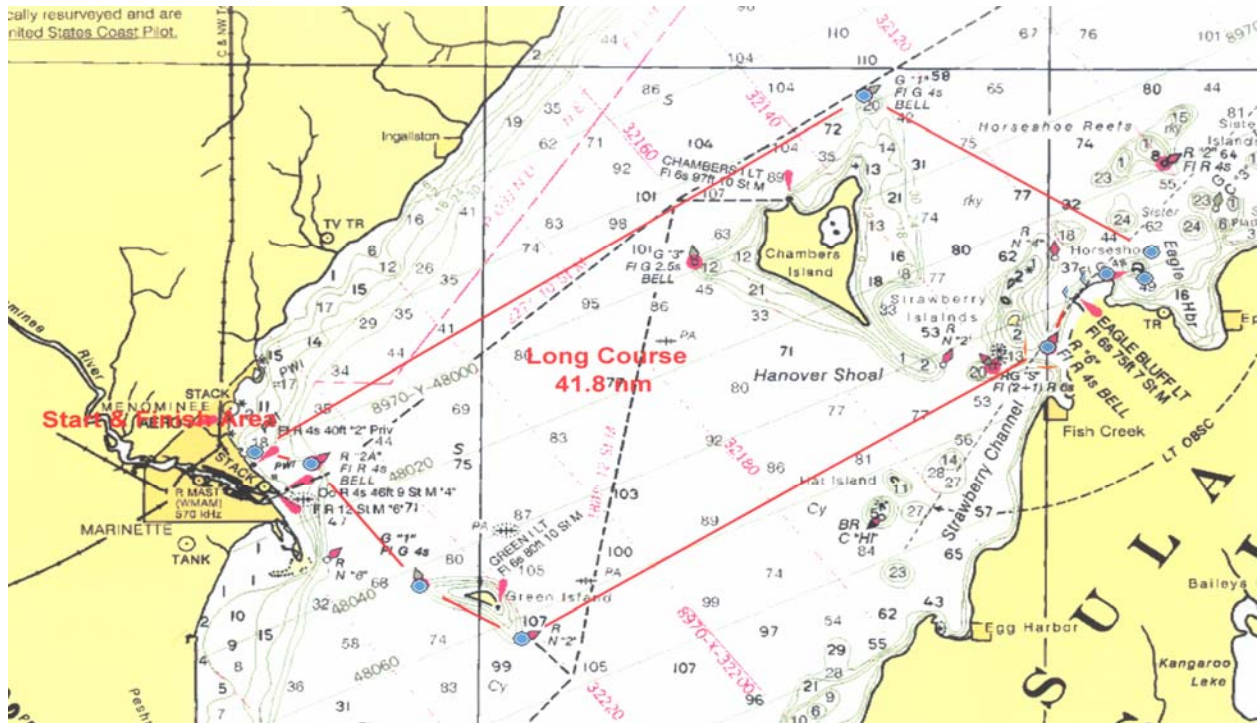
- 11.1 Scoring will be done by "time on distance" calculations using the course distances stated in Appendix A, and the ratings assigned at the time of registration. Overall Winner will be the Division I mono-hull scoring the lowest corrected time after sailing Course 1.
- 11.2 The Overall Winner, Division Winners, and Section Winners will be announced Saturday evening as soon as scoring is completed. All results will be posted on the Official Notice Board and on the M&MYC website as soon as possible. (www.mmyc.org)

**100 MILER
M&M YACHT CLUB, MENOMINEE, MI
JULY 25, 2009
SAILING INSTRUCTIONS**

Appendix A – Courses to Be Sailed

Course 1 – 41.8 nm (Traditional Spinnaker Course)

After the start proceed in an Easterly direction leaving the Menominee Shoal Buoy “R2A” to Starboard, thence in a Southeasterly direction leaving the Green Island Buoys “G1” and “N2” as well as Green Island to Port. Proceed in a Northeasterly direction to the Western shore of Door County, leaving the Fish Creek Buoy “R6” to Port, thence around Eagle Bluff, leaving it to Starboard, and Horseshoe Island, leaving it to Port. From there in a Northwesterly direction around the Northern end of Chambers Island and the North Chambers Island Buoy “G1”, leaving both the island and the buoy to Port. From there, proceed in a Southwesterly direction to the finish between the Northeastern corner of the Menominee Breakwater and an inflatable orange Mark set by the Race Committee, finishing North to South. The course length is 41.8 nautical miles.



**100 MILER
M&M YACHT CLUB, MENOMINEE, MI
JULY 25, 2009
SAILING INSTRUCTIONS**

Appendix A – Courses to Be Sailed

Course 2 – 35.8 nm (Non-Spinnaker Course)

After the start proceed in a Northeasterly direction to the Western shore of Door County, leaving both the Fish Creek Buoy “RG-S” and “R6” to Port. **Take special care to avoid the shallows around Hanover Shoal and “RN2”**. Thence in a Northerly direction to the Eagle Bluff Buoy “R4”, leaving it to Port. Thence in a Northwesterly direction to the North Chambers Island Buoy “G1”, leaving both the island and the buoy to Port. From there, proceed in a Southwesterly direction to the finish between the Northeastern corner of the Menominee Breakwater and an inflatable orange Mark set by the Race Committee, finishing North to South. The course length is 35.8 nautical miles.

